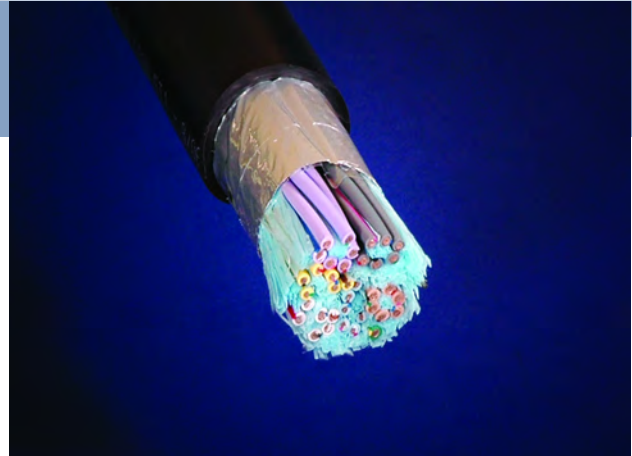


UL /CSA Listing: Consult individual specifications



Rated for 1 million rolling flex cycles.				
Priced for lower flex applications.				
UL/CSA approved, see each specification.				
RoHS Compliant.				
APPLICATIONS Internal curring or external. Designed for robotic applications.				
Eco-Index: RoHS Values				
<90ppm	<5ppm	<5ppm	<5ppm	<1000ppm
Pb	Cd	Cr+6	Hg	PBDE's PPB's

PHYSICAL CONSTRUCTION DESCRIPTION Each robotic cable is designed with high strand tinned copper. Paired, quad, or single components are used and cabled together with an over all AL/PET (AL side in) tape and drain and jacketed in PVC.



Series No.	Conductor	Insulation	Shield	Tapes	Outer Jacket	Overall Shield and Drain	Bend Radius Inches
40517	22 AWG (19/34) TC	SR -PVC	AL/PET	Part of Shield	PVC	YES	7.00
40210	16 AWG (65/34) TC 18 AWG (41/34) TC	PVC	Overall AL/PET	PET	PVC	YES	11.75
40211	16 AWG (65/34) TC	PVC	Overall AL/PET	PET	Oil Resistant PVC	YES	14.50

Part No.	No. of Conductors	No. of Pairs	Pounds of Cu	Jacket OD (Nom.)		Put-up
				Inches	mm	
40517-33-000-S-01000	33	16	137	0.580	14.73	Bulk
40210-37-000-S-01000	37	0	293	0.985	25.02	Bulk
40211-49-000-S-01000	49	12 quads	473	1.200	30.41	Bulk

Standard jacket color is black. All data is for reference only and is subject to change.